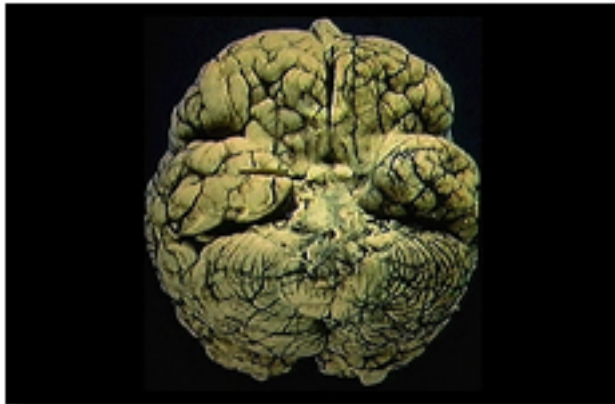


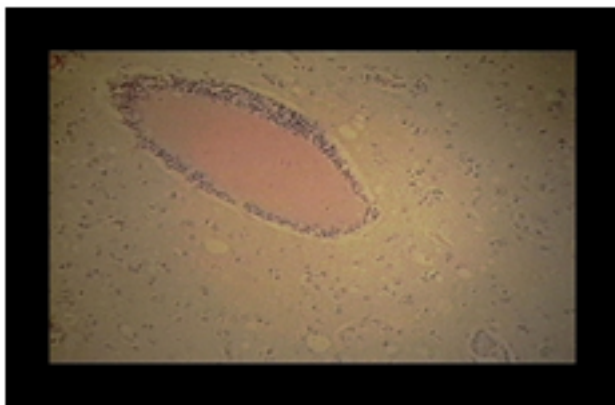
CNS 01

Dense exudate in the subarachnoid space surrounds vessels and would cause communicating hydrocephalus.



CNS 02

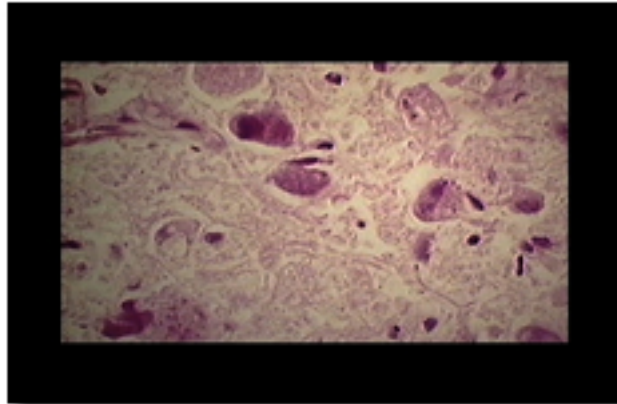
Exudate concentrated at the base of the brain is seen here. The exudate may infiltrate cranial nerves.



CNS 03

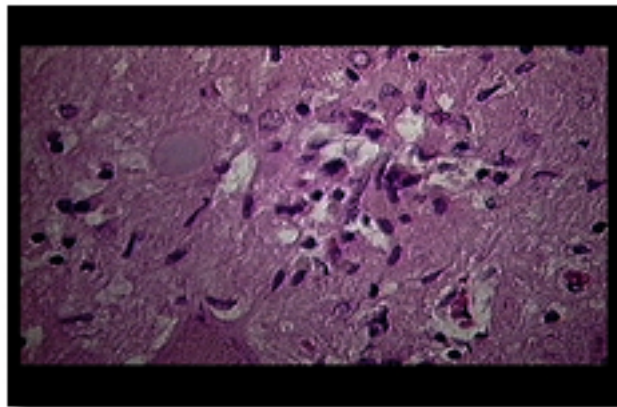
Perivascular cuffing is seen in this image. Mononuclear cells escape from

vessels and cluster around the vessel.



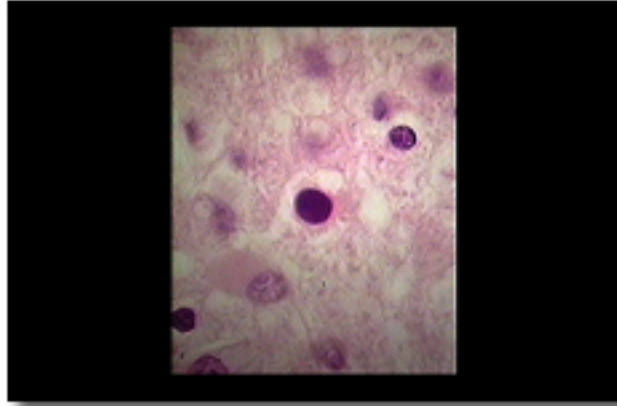
CNS 04

This image illustrates inclusion bodies in neurons. There may be different types of inclusion bodies in infections caused by different viruses.



CNS 05

A glial nodule is seen. This is produced by proliferation of microglia, which engulf dead neurons and remain for long periods as a hallmark.



CNS 06

This is an example of an oligodendrocyte nucleus filled with viral particles.