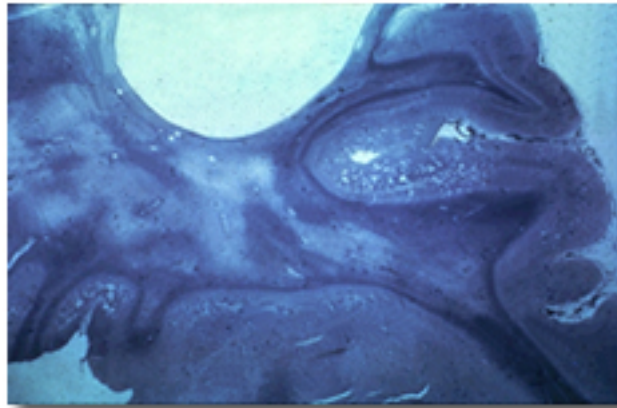


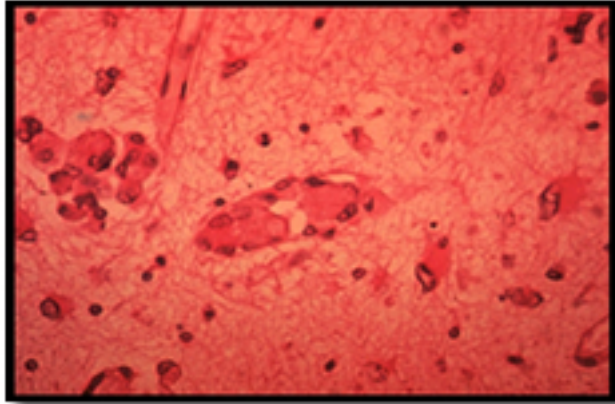
### IMB 01

Schematic representation of the compartments of an animal cell, showing organelles including a lysosome, which is the site of degradation of many types of molecules. *From McGill Molson Medical Informatics Project.*



### IMB 02

This luxol fast blue-stained section shows hypomyelination in the white matter in Krabbe disease. The lateral ventricle is at the top. The absence of dark blue staining in much of the periventricular white matter indicate the absence of myelin. Note that the U-fibers adjacent to the cortical gyri have normal myelin.



**IMB 03**

The globoid cell is in the center of the image.