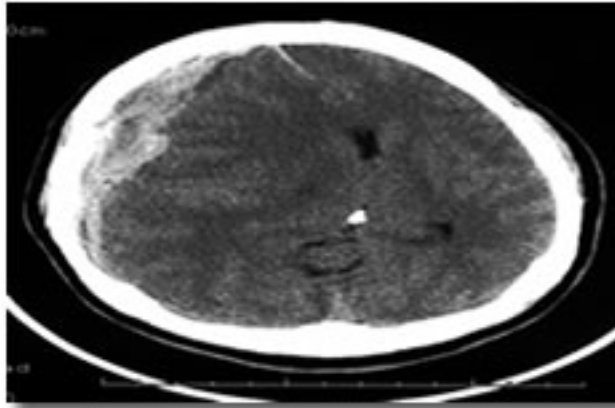


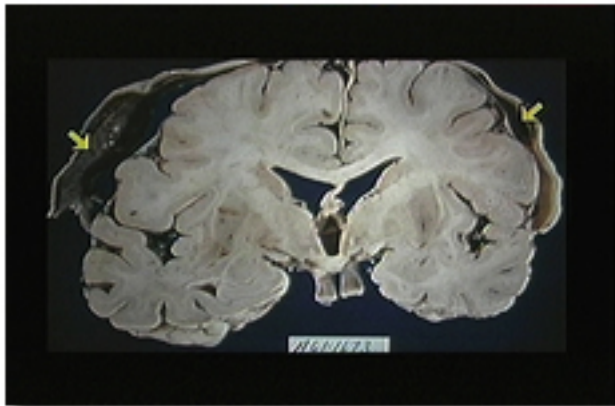
TRM 01

Berger – epidural; credit: image courtesy of Dr. Kevin Berger, MSU



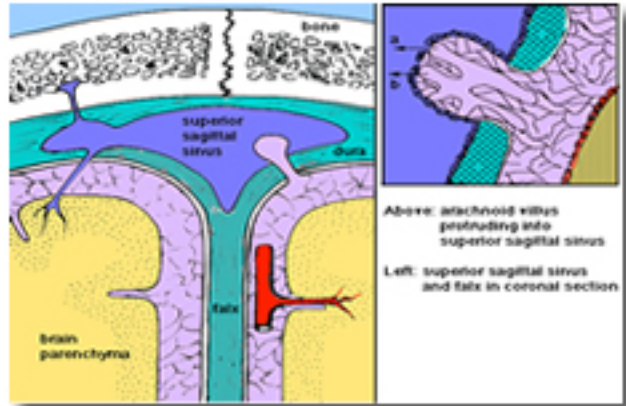
TRM 02

CT scan showing subdural hematoma causing mass effect with compression of the right hemisphere (on the left side of the image) across the midline.



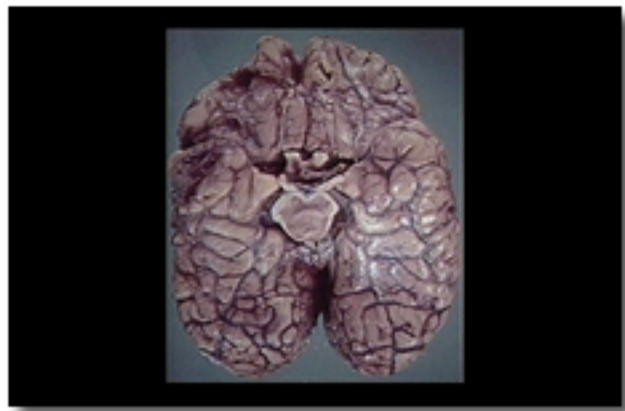
TRM 03

This image shows a subdural hematoma between the dura and the arachnoid.



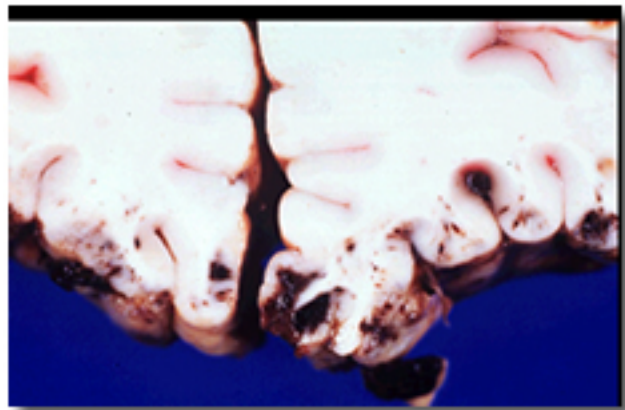
TRM 04

This diagram shows the subarachnoid space (lavendar) containing an artery (red). The arachnoid is shown as gray, with the pia as a black line adjacent to the gold brain parenchyma.



TRM 05

Contusions are seen in frontal and temporal lobes, the most common sites for contusions.



TRM 06

This is a close-up of a gross coronal section of frontal lobe, showing contusions in the orbital frontal lobe. Hemorrhagic areas are clearly seen; microscopic analysis would reveal neuronal necrosis.